

# BOXES SOLUTIONS



- wide range of dimensions: over 40 enclosures with blank door, 19 models with glazed door, enclosures with single blank door, double door with rod system and enclosure with single glazed door
- mounting plate included
- main accessories: plinth, internal door kit and modular chassis
- optional accessories: micro perforated plates and finned cable entry plates
- switch boxes in 5 different versions, with screwed cover, clear cover, for bus system, flanged, with hinged cover
- rack enclosures from 3 to 21 units in 450 and 550mm depths.



## ST SINGLE DOOR BOXES



## CHARACTERISTICS

Enclosure and door manufactured from 15/10 sheet steel.  
Flat mounting plate manufactured from 25/10 sendzimir sheet steel

## PAINT FINISH

ETA standard epoxy polyester powder coating.  
Enclosure and door: colour RAL 7035 textured finish.

## DELIVERY

Box supplied with:

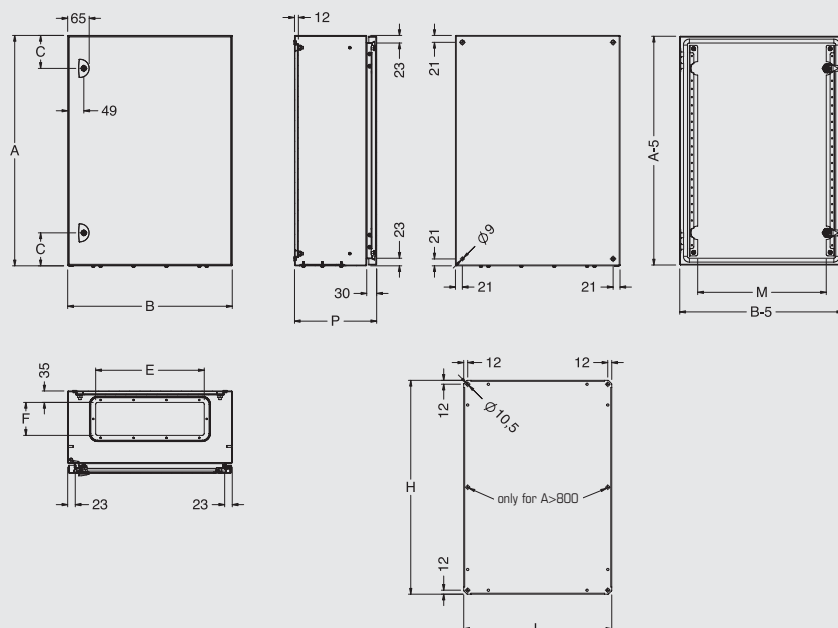
- 2 sendzimir rails to be fixed on the door
- mounting plate
- cable entry plate with sealing gasket
- screws for earth connection and mounting accessories.
- locking system with Ø 3mm double bar key

## CONFORMITY AND APPROVAL



## PROTECTION RATINGS

- IP 66 complying with IEC EN62208; EN60529
- NEMA 4 complying with UL508A; UL50
- protection degree guaranteed by the two-component polyurethane foam seal (for technical details, refer to page 260)
- impact resistance IK10 complying with IEC EN62208; EN50102.





## ST 200 WIDE

ST CODE	BOX DIMENSIONS				CABLE ENTRY		DOOR SPACE	MOUNTING PLATE DIM.		NR OF LOCK
	B	A	P	C	E	F		L	H	
ST2315	200	300	150	150	130	50	91	150	250	1

## ST 300 WIDE

ST CODE	BOX DIMENSIONS				CABLE ENTRY		DOOR SPACE	MOUNTING PLATE DIM.		NR OF LOCK
	B	A	P	C	E	F		L	H	
ST3315	300	300	150	150	230	50	191	250	250	1
ST3415	300	400	150	200	230	50	191	250	350	1
ST3420	300	400	200	200	230	100	191	250	350	1
ST3515	300	500	150	250	230	50	191	250	450	1
ST3520	300	500	200	250	230	100	191	250	450	1

## ST 400 WIDE

ST CODE	BOX DIMENSIONS				CABLE ENTRY		DOOR SPACE	MOUNTING PLATE DIM.		NR OF LOCK
	B	A	P	C	E	F		L	H	
ST4315	400	300	150	150	230	50	291	350	250	1
ST4320	400	300	200	150	330	100	291	350	250	1
ST4420	400	400	200	200	330	100	291	350	350	1
ST4515	400	500	150	250	230	50	291	350	450	1
ST4520	400	500	200	250	330	100	291	350	450	1
ST4525	400	500	250	250	330	100	291	350	450	1
ST4620	400	600	200	100	330	100	291	350	550	2
ST4625	400	600	250	100	330	100	291	350	550	2
ST4640	400	600	400	100	330	100	291	350	550	2

## ST 500 WIDE

ST CODE	BOX DIMENSIONS				CABLE ENTRY		DOOR SPACE	MOUNTING PLATE DIM.		NR OF LOCK
	B	A	P	C	E	F		L	H	
ST5520	500	500	200	250	330	100	391	450	450	1
ST5720	500	700	200	100	330	100	391	450	650	2
ST5725	500	700	250	100	330	100	391	450	650	2

## ST 600 WIDE

ST CODE	BOX DIMENSIONS				CABLE ENTRY		DOOR SPACE	MOUNTING PLATE DIM.		NR OF LOCK
	B	A	P	C	E	F		L	H	
ST6420	600	400	200	200	530	100	491	550	350	1
ST6430	600	400	300	200	530	100	491	550	350	1
ST6620	600	600	200	100	530	100	491	550	550	2
ST6630	600	600	300	100	530	100	491	550	550	2
ST6640	600	600	400	100	530	100	491	550	550	2
ST6820	600	800	200	100	530	100	491	550	750	2
ST6825	600	800	250	100	530	100	491	550	750	2
ST6830	600	800	300	100	530	100	491	550	750	2
ST6840	600	800	400	100	530	100	491	550	750	2
ST61025	600	1000	250	200	530	100	491	550	950	2
ST61030	600	1000	300	200	530	100	491	550	950	2
ST61040	600	1000	400	200	530	100	491	550	950	2
ST61230	600	1200	300	200	530	100	491	550	1150	3

## ST 800 WIDE

ST CODE	BOX DIMENSIONS				CABLE ENTRY		DOOR SPACE	MOUNTING PLATE DIM.		NR OF LOCK
	B	A	P	C	E	F		L	H	
ST8830	800	800	300	100	530	100	691	750	750	2
ST8840	800	800	400	100	530	100	691	750	750	2
ST81030	800	1000	300	200	530	100	691	750	950	2
ST81040	800	1000	400	200	530	100	691	750	950	2
ST81230	800	1200	300	200	530	100	691	750	1150	3

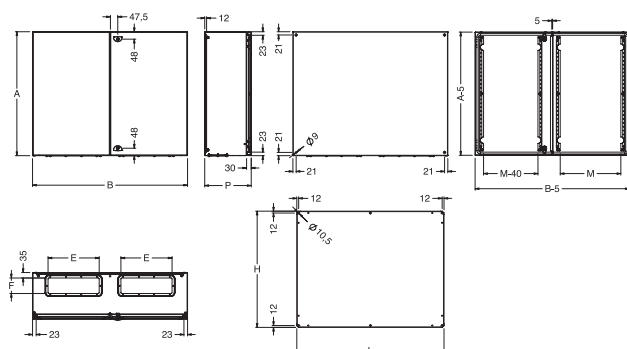


# ST DOUBLE DOOR BOXES



Box with rod system.

## BOX WITH STANDARD LOCKING SYSTEM



## CHARACTERISTICS

Enclosure and door manufactured from 15/10 sheet steel.  
Mounting plate with folded edges manufactured from 25/10 sendzimir sheet steel.

## PAINT FINISH

ETA standard epoxy polyester powder coating.  
Enclosure and door: colour RAL 7035 textured finish.

## DELIVERY

Box supplied with:

- 4 zincpassivated rails to be fixed on the door
- mounting plate
- 2 cable entry plates with sealing gasket
- screws for earth connection and mounting accessories
- locking system with  $\varnothing$  3mm double bar key

## CONFORMITY AND APPROVAL

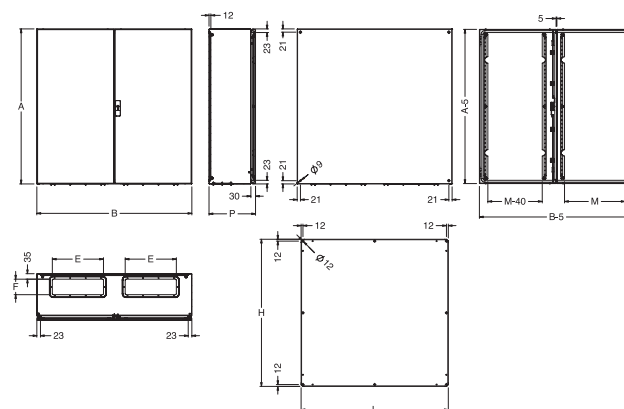


RINA

## PROTECTION RATINGS

- IP 66 complying with IEC EN62208; EN60529
- NEMA 12 complying with UL508A; UL50
- protection degree guaranteed by the two-component polyurethane foam seal (for technical details, refer to page 260)
- impact resistance IK10 complying with IEC EN62208; EN50102.

## BOX WITH ROD SYSTEM



## DOUBLE DOOR BOXES WITH STANDARD LOCKING SYSTEM

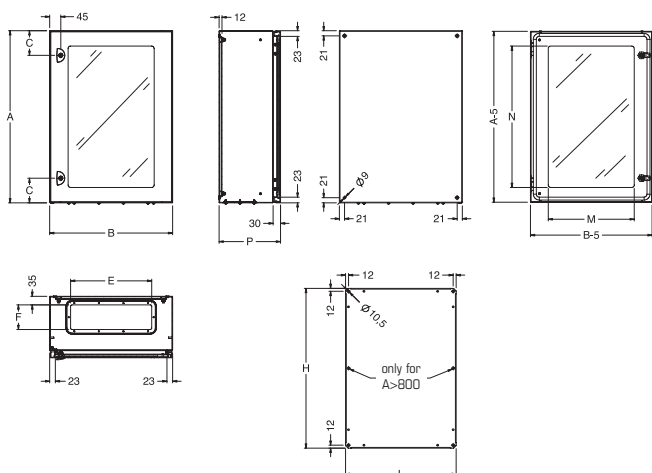
ST CODE	BOX DIMENSIONS			CABLE ENTRY		NR. CABLE ENTRY	DOOR SPACE	MOUNTING PLATE DIM.	
	B	A	P	E	F			L	H
ST8630	800	600	300	530	100	1	291	750	550
ST10820	1000	800	200	330	100	2	391	950	750
ST10830	1000	800	300	330	100	2	391	950	750

## DOUBLE DOOR BOXES WITH ROD SYSTEM

ST CODE	BOX DIMENSIONS			CABLE ENTRY		DOOR SPACE	MOUNTING PLATE DIM.	
	B	A	P	E	F		L	H
ST101030	1000	1000	300	330	100	391	950	950
ST101230	1000	1200	300	330	100	391	950	1150
ST121230	1200	1200	300	330	100	491	1150	1150



# STP BOXES WITH GLAZED DOOR



## CHARACTERISTICS

Enclosure manufactured from 15/10 sheet steel.  
Door manufactured from 15/10 sheet steel up to H=800mm;  
H>800, door manufactured from 20/10 sheet steel.  
Mounting plate manufactured from 25/10 sendzimir sheet steel.  
3mm transparent plexiglas sheet.

## PAINT FINISH

ETA standard epoxy polyester powder coating.  
Enclosure and door: colour RAL 7035 textured finish.

## DELIVERY

Box supplied with:  
- mounting plate  
- cable entry plate with sealing gasket  
- screws for earth connection and mounting accessories  
- locking systems with  $\varnothing$  3mm double bar key.

## CONFORMITY AND APPROVAL



RINA

## PROTECTION RATINGS

- IP 66 complying with IEC EN62208; EN60529
- NEMA 12 complying with UL508A; UL50
- protection degree guaranteed by the two-component polyurethane foam seal (for technical details, refer to page 260)
- impact resistance IK10 complying with IEC EN62208; EN50102.

## BOXES WITH GLAZED DOOR

STP CODE	BOX DIMENSIONS			CABLE ENTRY			DOOR SPACE		MOUNTING PLATE DIM.		NR. OF LOCKS
	B	A	P	C	E	F	M	N	L	H	
STP4320	400	300	200	150	230	50	250	175	350	250	1
STP4420	400	400	200	200	330	100	250	275	350	350	1
STP4520	400	500	200	250	330	100	250	375	350	450	1
STP4525	400	500	250	250	330	100	250	375	350	450	1
STP4620	400	600	200	100	330	100	250	475	350	550	2
STP4625	400	600	250	100	330	100	250	475	350	550	2
STP5720	500	700	200	100	330	100	350	575	450	650	2
STP5725	500	700	250	100	330	100	350	575	450	650	2
STP6420	600	400	200	200	530	100	450	275	550	350	1
STP6430	600	400	300	200	530	100	450	275	550	350	1
STP6620	600	600	200	100	530	100	450	475	550	550	2
STP6630	600	600	300	100	530	100	450	475	550	550	2
STP6825	600	800	250	100	530	100	450	675	550	750	2
STP6830	600	800	300	100	530	100	450	675	550	750	2
STP61025	600	1000	250	200	530	100	450	875	550	950	2
STP61030	600	1000	300	200	530	100	450	875	550	950	2
STP61230	600	1200	300	200	530	100	450	1075	550	1150	3
STP81030	800	1000	300	200	530	100	650	875	750	950	2
STP81230	800	1200	300	200	530	100	650	1075	750	1150	3



# ST BOXES COMPLEMENTARY ACCESSORIES

## INNER DOOR STP01

### CHARACTERISTICS

Frame and door manufactured from 15/10 sheet steel.

### PAINT FINISH

ETA standard epoxy polyester powder coating.  
Colour RAL 7035 textured finish.

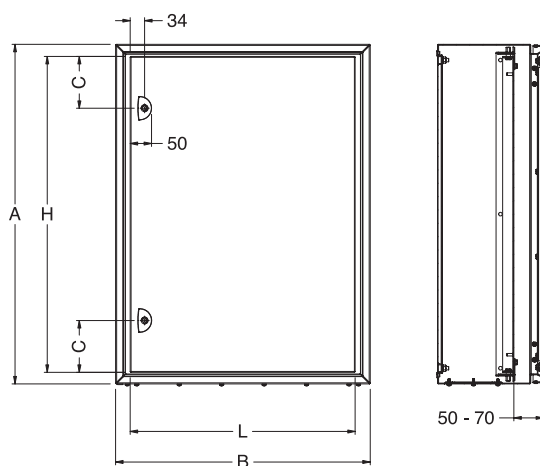
### DELIVERY

Supply includes:

- frame
- door
- locking system with  $\varnothing$  3mm double bar key
- mounting accessories.

### PROTECTION RATINGS

- external: as box (IP 66)
- internal: IP 2X.



## INNER DOOR

STP01 CODE	FOR BOXES		BOX DIMENSIONS			DOOR DIMENSIONS			NR. OF LOCKS
	ST CODE	STP CODE	B	A	P	L	H	C	
STP0145	ST4520	STP4520	400	500	200	330	444	222	1
STP0145	ST4525	STP4525	400	500	250	330	444	222	1
STP0146	ST4620	STP4620	400	600	200	330	544	272	1
STP0146	ST4625	STP4625	400	600	250	330	544	272	1
STP0157	ST5720	STP5720	500	700	200	430	644	322	1
STP0157	ST5725	STP5725	500	700	250	430	644	322	1
STP0164	ST6420	STP6420	600	400	200	530	344	172	1
STP0164	ST6430	STP6430	600	400	300	530	344	172	1
STP0168	ST6825	STP6825	600	800	250	530	744	122	2
STP0168	ST6830	STP6830	600	800	300	530	744	122	2
STP01610	ST61025	STP61025	600	1000	250	530	944	122	2
STP01610	ST61030	STP61030	600	1000	300	530	944	122	2
STP01612	ST61230	STP61230	600	1200	300	530	1144	122	2
STP01810	ST81030	STP81030	800	1000	300	730	944	122	2
STP01812	ST81230	STP81230	800	1200	300	730	1144	122	2





## MODULAR KIT MDST

### CHARACTERISTICS

Frame and front panels manufactured from 15/10 sheet steel.

### PAINT FINISH

ETA standard epoxy polyester powder coating.  
Colour: RAL 7035 textured finish.

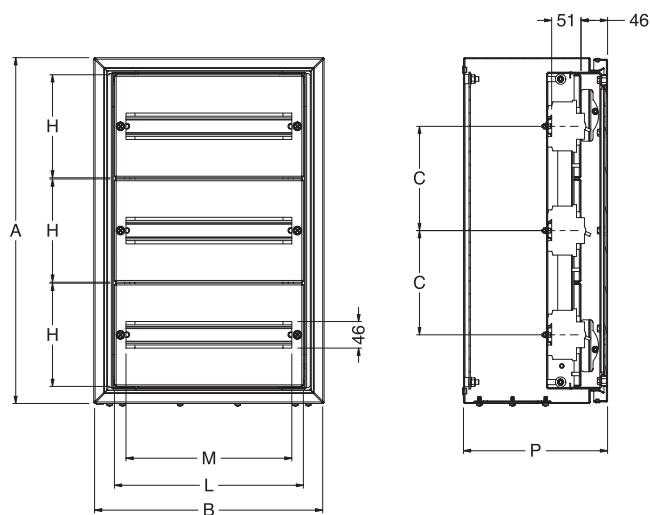
### DELIVERY

Supply includes:

- frame
- front panel with modular slot complete with mounting accessories and captive screws
- zincpassivated DIN rail (for each module)
- mounting accessories.

### PROTECTION RATINGS

- external: as box (IP 66).
- internal: IP 1X.



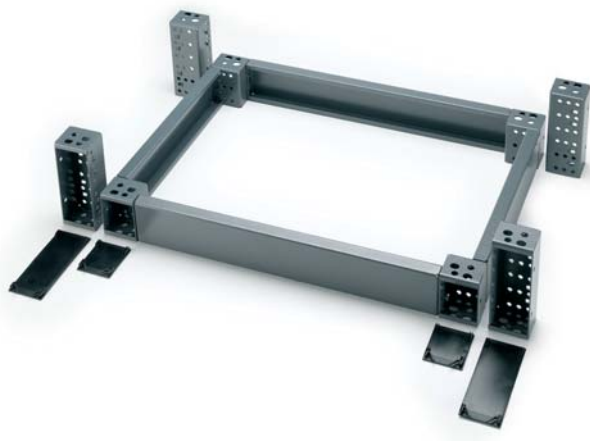
## MODULAR KIT

MDST CODE	FOR BOXES		BOX DIM.			PANEL DIM.				NR. OF MODULES	NR. OF PANELS
	ST CODE	STP CODE	B	A	P	L	H	M	C		
MDST4300	ST4320	STP4320	400	300	200	328	241	288	-	1x16	1
MDST4400	ST4420	STP4420	400	400	200	328	341	288	150	2x16	1
MDST4500	ST4520	STP4520	400	500	200	328	441	288	150	3x16	1
MDST4500	ST4525	STP4525	400	500	250	328	441	288	150	3x16	1
MDST4600	ST4620	STP4620	400	600	200	328	179	288	181	3x16	3*
MDST4600	ST4625	STP4625	400	600	250	328	179	288	181	3x16	3*
MDST6600	ST6620	STP6620	600	600	200	528	179	468	181	3x26	3**
MDST6600	ST6630	STP6630	600	600	300	528	179	468	181	3x26	3**
MDST6800	ST6825	STP6825	600	800	250	528	179	468	181	4x26	4**
MDST6800	ST6830	STP6830	600	800	300	528	179	468	181	4x26	4**
MDST61000	ST61025	STP61025	600	1000	250	528	179	468	181	5x26	5**
MDST61000	ST61030	STP61030	600	1000	300	528	179	468	181	5x26	5**
MDST61200	ST61230	STP61230	600	1200	300	528	179	468	181	6x26	6**

\* available on request the front blank panel MDST4200.

\*\* available on request the front blank panel MDST6200.





#### UNIVERSAL CORNER PIECES

ATZE CODE	DESCRIPTION
ATZE-A100	CORNER PIECES FOR PLINTH H=100
ATZE-A200	CORNER PIECES FOR PLINTH H=200

Supply includes 4 pieces with mounting accessories

#### UNIVERSAL FRONT CROSSPIECES

ATZE CODE	DESCRIPTION	CROSS. LENGTH (mm)
ATZE-T0600	FRONT CROSS. FOR PLINTH W=600	444
ATZE-T0800	FRONT CROSS. FOR PLINTH W=800	644
ATZE-T1000	FRONT CROSS. FOR PLINTH W=1000	844
ATZE-T1200	FRONT CROSS. FOR PLINTH W=1200	1044

Supply includes 2 pieces.

To order the universal frontal crosspieces H=200, add the suffix "D" to the code. I.E.: ATZE-T0600D.

#### MODULAR PLINTH ATZE

##### CHARACTERISTICS

Corner pieces manufactured from 25/10 sheet steel, with PVC front covers caps.

Front and side crosspieces manufactured from 20/10 press bent sheet steel.

##### PAINT FINISH

ETA standard epoxy polyester powder coating.

Colour: RAL 7025 textured finish

##### DELIVERY

The modular plinth is made up of:

- corner pieces: supply includes 4 pieces complete with front covers and mounting hardware
- front crosspieces: supply includes 2 pieces
- side crosspieces: supply includes 2 pieces

#### SIDE CROSSPIECES FOR ST BOXES

ATZE CODE	DESCRIPTION	CROSS. LENGTH (mm)
ATZE-T0300S	SIDE CROSS. FOR PLINTH D=300	136
ATZE-T0400A	SIDE CROSS. FOR PLINTH D=400	236

Supply includes 2 pieces.

To order the side crosspieces H=200, add the suffix "D" to the code. I.E.: ATZE-T0300SD.

**Note: for more information, assembly drawings and dimensional features, please check on page 217.**





Supply includes: one piece with mounting accessories.

### CANOPY TT

To be used for outdoor installation where the boxes are exposed to weather conditions.  
Manufactured from 15/10 sheet steel.

#### PAINT FINISH

ETA standard epoxy polyester powder coating.

Colour: RAL 7035 textured finish.

We recommend the use of a special paint finish for enclosures placed outdoor.

#### CANOPY TT

TT CODE	WIDTH	DEPTH
TT104	400	200
TT204	400	250
TT105	500	200
TT205	500	250
TT106	600	250
TT206	600	300
TT208	800	300



### HORIZONTAL DOOR RAIL WC

Manufactured from 15/10 sendzimir sheet steel with  $\varnothing$  4.2mm holes at 25mm centres.

To be fixed on door profiles and used to fix cable or trunking.

#### HORIZONTAL DOOR RAIL

WC CODE	BOX WIDTH
WC001	300
WC002	400
WC003	500
WC004	600
WC005	800

Supply includes: one piece with mounting accessories.



### DOOR STOP WA060

To be used to hold the door open at 90° avoiding accidental closing. Manufactured from 20/10 and 30/10 zincpassivated sheet steel, it can be used on ST and STP boxes.

Supply includes: single piece with mounting accessories and gasket for IP 66.





## MOUNTING PLATE ADJUSTER WA

To be used to adjust the depth of the mounting plate.  
Manufactured from 20/10 zincpassivated sheet steel.

### MOUNTING PLATE ADJUSTER

WA CODE	BOX DEPTH
WA980	200
WA981	250
WA982	300

Supply includes: 2 pieces.

- 4 pieces are required for box height ≤ 800 mm
- 6 pieces are required for box height > 800 mm (single door)



**NEW**

## MICROPERFORATED MOUNTING PLATES WPAZ ... F

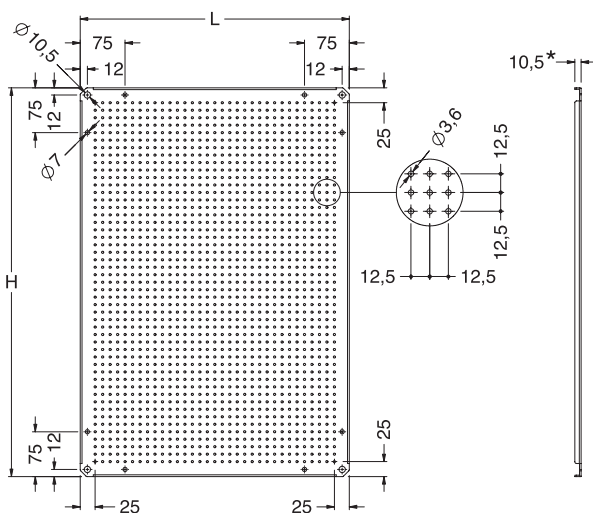
The microperforated mounting plate WPAZF is assembled with the same procedure as the standard mounting plates.

### CHARACTERISTICS

Made of 25/10 galvanized sheet steel.

Starting from size 500x700 mm (WxH), the plate has raised edges on all sides.

Available upon request.



\*Plate with raised edges starting from enclosure size 500x700.

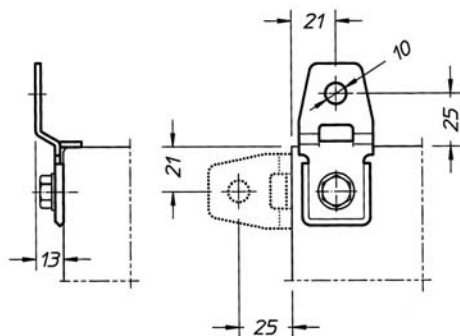
### MICROPERFORATED MOUNTING PLATES

WPAZ CODE	BOX DIMENSIONS		MOUNTING PLATE DIM.	
	B	A	L	H
WPAZ-ST23F	200	300	150	250
WPAZ-ST33F	300	300	250	250
WPAZ-ST35F	300	500	250	450
WPAZ-ST43F	400	300	350	250
WPAZ-ST44F	400	400	350	350
WPAZ-ST45F	400	500	350	450
WPAZ-ST46F	400	600	350	550
WPAZ-ST55F	500	500	450	450
WPAZ-ST57F	500	700	450	650
WPAZ-ST64F	600	400	550	350
WPAZ-ST66F	600	600	550	550
WPAZ-ST68F	600	800	550	750
WPAZ-ST610F	600	1000	550	950
WPAZ-ST612F	600	1200	550	1150
WPAZ-ST88F	800	800	750	750
WPAZ-ST810F	800	1000	750	950
WPAZ-ST812F	800	1200	750	1150
WPAZ-ST1010F	1000	1000	950	950
WPAZ-ST1012F	1000	1200	950	1150
WPAZ-ST1212F	1200	1200	1150	1150



**WALL MOUNTING BRACKETS SDWC-010**

Manufactured from 25/10 zincpassivated sheet steel.  
Supply includes: nr. 4 pieces.

**CABLE ENTRY GLAND PLATE WC****CHARACTERISTICS**

Manufactured from 15/10 sheet steel.

**PAINT FINISH**

Colour: RAL 7035 textured finish

**DELIVERY**

Supply includes nr. 1 piece with sealing gasket and mounting accessories.

**CABLE ENTRY GLAND PLATE**

WC CODE	PLATE DIMENSIONS
WC016B	158 X 78
WC018B	258 X 78
WC019B	258 X 128
WC020B	358 X 128
WC022B	558 X 128

**NEW****FINNED CABLE ENTRY PLATES WC ... A****CHARACTERISTICS**

Manufactured from 15/10 sheet steel.

**PAINT FINISH**

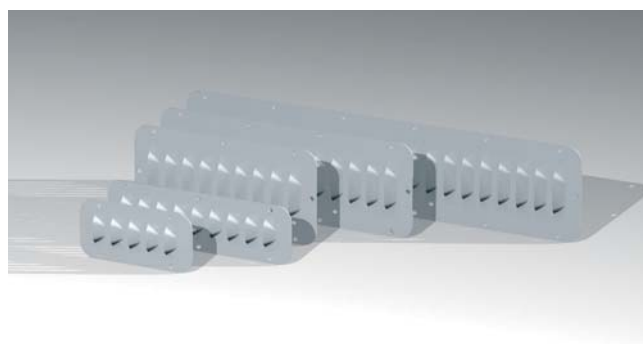
Colour: RAL 7035 textured finish

**DELIVERY**

Supply includes nr. 1 piece complete with seals and mounting accessories.

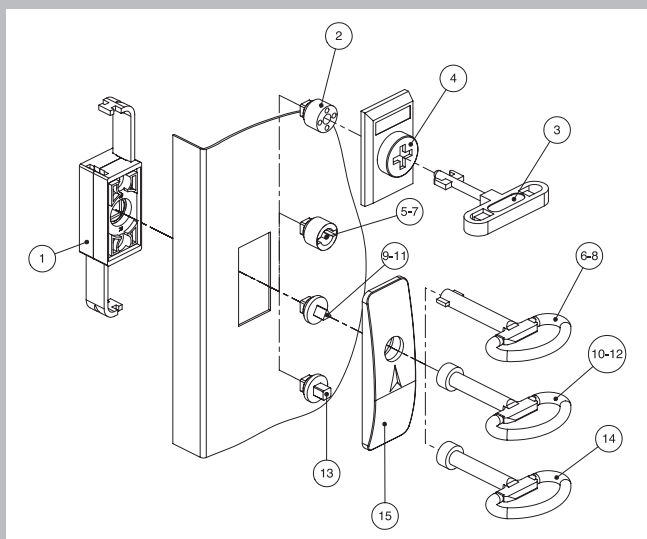
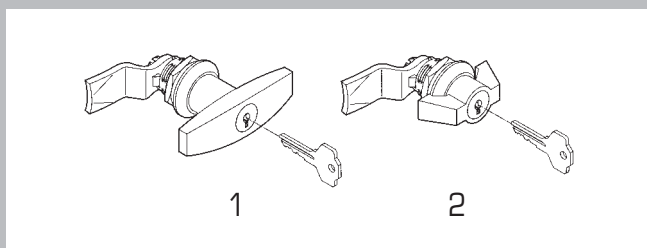
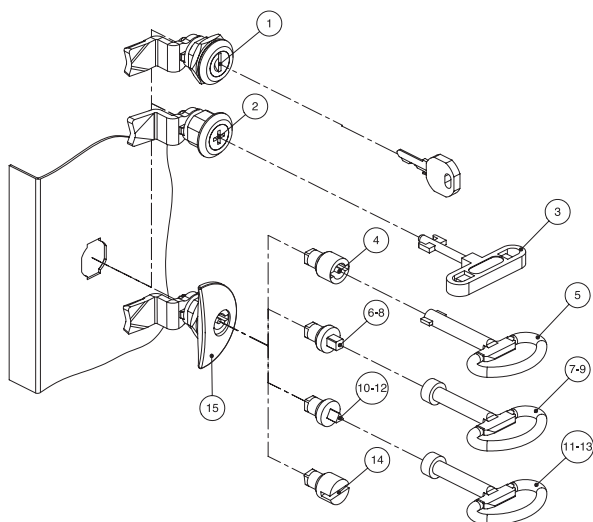
**FINNED CABLE ENTRY PLATES**

WC CODE	PLATE DIMENSIONS
WC016A	158 X 78
WC018A	258 X 78
WC019A	258 X 128
WC020A	358 X 128
WC022A	558 X 128



Available on request.





## LOCKING SYSTEMS WE

WE CODE	REF.	DESCRIPTION
*WE235	1	VIRO INSERT
*WE240	2	FIAT INSERT
WE210	3	FIAT KEY
WE255	4	ETA INSERT Ø 3
WE160	5	ETA KEY Ø 3
WE260	6	INSERT $\nabla$ 6
WE263	7	KEY $\nabla$ 6
WE265	8	INSERT $\nabla$ 7
WE268	9	KEY $\nabla$ 7
WE270	10	INSERT $\nabla$ 6,5
WE273	11	KEY $\nabla$ 6,5
WE275	12	INSERT $\nabla$ 8
WE278	13	KEY $\nabla$ 8
WE280	14	SCREW DRIVER INSERT
WE250	15	LOCK

\*Including cam and locking cover.

## LOCKING SYSTEMS WE

WE CODE	REF.	DESCRIPTION
WE285	1	T HANDLE WITH KEYLOCK
WE288	2	WING HANDLE WITH KEYLOCK

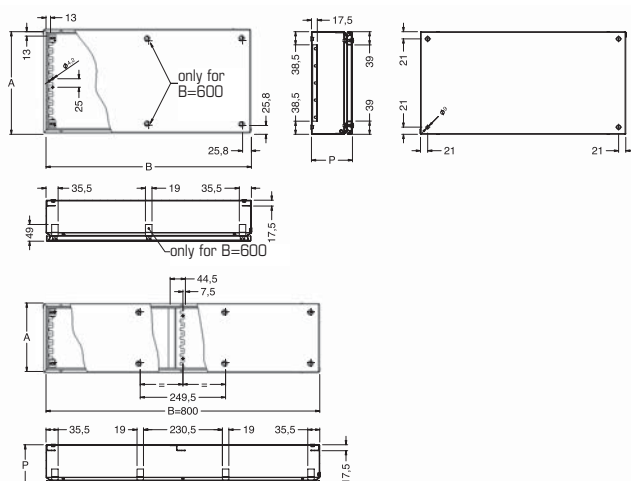
## LOCKING SYSTEMS FOR DOUBLE DOOR BOXES WITH ROD MECHANISM

WE CODE	REF.	DESCRIPTION
WE010	1	ROD DRIVE
WE080	2	FIAT INSERT
WE210	3	FIAT KEY
WE027	4	FIAT COVER
WE030	5	ETA INSERT Ø 3
WE160	6	ETA KEY Ø 3
WE040	7	ETA INSERT Ø 5
WE170	8	ETA KEY Ø 5
WE050	9	INSERT $\nabla$ 7
WE180	10	KEY $\nabla$ 7
WE060	11	INSERT $\nabla$ 8
WE190	12	KEY $\nabla$ 8
WE070	13	INSERT $\nabla$ 7
WE200	14	KEY $\nabla$ 7
WE020	15	ETA COVER



# SD TERMINAL BOXES

## SDV TERMINAL BOXES WITH SCREWED LID



To be ordered separately:  
- mounting plate and/or DIN rails.

### CHARACTERISTICS/DELIVERY

Box manufactured from 12/10 sheet steel.

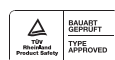
- lid fixed with captive screws
- holes for fixing hinges.

### PAINT FINISH

ETA standard epoxy polyester powder coating.

Colour: RAL 7035 textured finish.

### CONFORMITY AND APPROVAL



RINA

### PROTECTION RATINGS

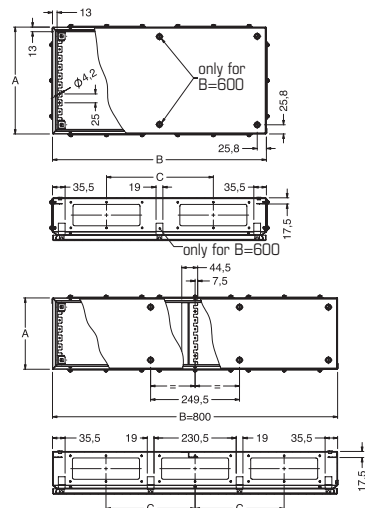
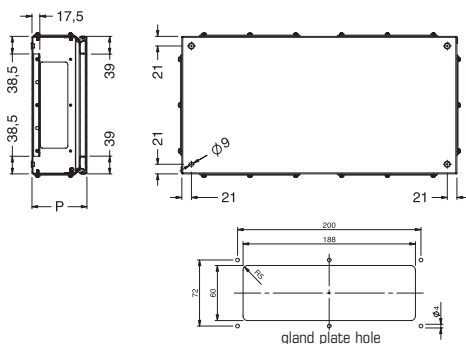
- IP 66 complying with IEC EN62208; EN60529
- NEMA 4 complying with UL508A; UL50
- protection degree guaranteed by the two-component polyurethane foam seal (for technical details, refer to page 260)
- impact resistance IK10 complying with IEC EN62208; EN50102 .

## TERMINAL BOXES

SDV CODE	BOX DIMENSIONS		
	B	A	P
SDV1108	150	150	80
SDV2208	200	200	80
SDV3208	300	200	80
SDV4208	400	200	80
SDV5208	500	200	80
SDV6208	600	200	80
SDV8208	800	200	80
SDV1112	150	150	120
SDV2212	200	200	120
SDV3112	300	150	120
SDV3212	300	200	120
SDV3312	300	300	120
SDV4212	400	200	120
SDV4312	400	300	120
SDV4412	400	400	120
SDV5212	500	200	120
SDV5312	500	300	120
SDV6212	600	200	120
SDV6312	600	300	120
SDV6412	600	400	120
SDV8212	800	200	120
SDV8412	800	400	120



# SDF TERMINAL BOXES WITH GLAND PLATES



## CHARACTERISTICS/DELIVERY

Box manufactured from 12/10 sheet steel with gland plates complete with gasket

- lid fixed with captive screws
- holes for fixing hinges.

## PAINT FINISH

ETA standard epoxy polyester powder coating.

Colour: RAL 7035 textured finish.

## CONFORMITY AND APPROVAL



RINA

## PROTECTION RATINGS

- IP 66 complying with IEC EN62208; EN60529
- NEMA 4 complying with UL508A; UL50
- protection degree guaranteed by the two-component polyurethane foam seal (for technical details, refer to page 260)
- impact resistance IK10 complying with IEC EN62208; EN50102.

## TERMINAL BOXES WITH GLAND PLATES

SDF CODE	B	DIMENSIONS			TOTAL NR. OF GLAND PLATES	NR. OF GLAND PLATES – SIDE "B"	NR. OF GLAND PLATES – SIDE "A"
		A	C	P			
SDF3212	300	200	-	120	2	2	-
SDF3312	300	300	-	120	4	2	2
SDF4212	400	200	-	120	2	2	-
SDF4312	400	300	-	120	4	2	2
SDF4412	400	400	-	120	4	2	2
SDF5212	500	200	130	120	4	4	-
SDF5312	500	300	130	120	6	4	2
SDF6212	600	200	150	120	4	4	-
SDF6312	600	300	150	120	6	4	2
SDF6412	600	400	150	120	6	4	2
SDF8212	800	200	150	120	6	6	-
SDF8412	800	400	150	120	8	6	2

To be ordered separately:  
- mounting plate and/or DIN rails.





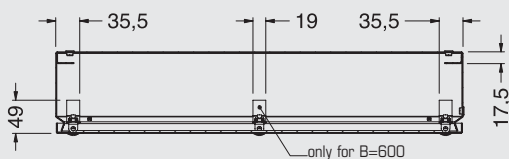
## PAINT FINISH

## PROTECTION RATINGS

## CONFORMITY AND APPROVAL



To be ordered separately:  
- mounting plate and/or DIN rails.





# SDVX-B TERMINAL BOXES FOR BUS SYSTEMS

NEW

## CHARACTERISTICS/DELIVERY

Boxes made of 12/10 sheet steel.

- hinged cover with tamper-proof screwed closure and plexiglas for internal inspection.

## PAINT FINISH

ETA standard epoxy polyester powder coating.

Colour: RAL 7035 textured finish.

## PROTECTION RATINGS

- IP 55.

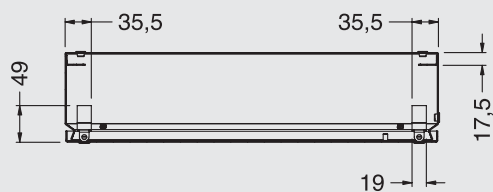
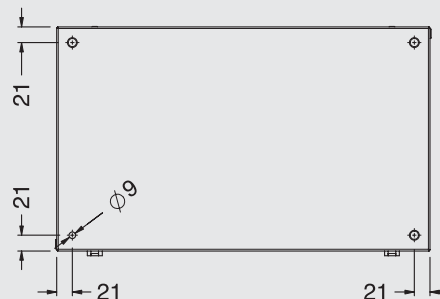
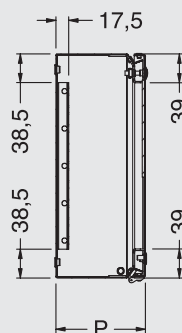
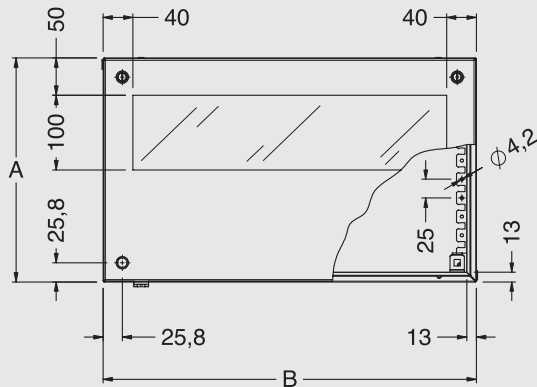
## CONFORMITY AND APPROVAL



## TERMINAL BOX FOR BUS SYSTEMS

SDVX CODE	BOX DIMENSIONS		
	B	A	P
SDVX5312B	500	300	120

To be ordered separately:  
- mounting plate and/or DIN rails.





# SDP TERMINAL BOXES WITH DOOR



## CHARACTERISTICS/DELIVERY

Box manufactured from 12/10 sheet steel.  
Door manufactured from 15/10 sheet steel.  
- locking system with  $\varnothing$  3mm double bar key.

## PAINT FINISH

ETA standard epoxy polyester powder coating.  
Colour: RAL 7035 textured finish.

## PROTECTION RATINGS

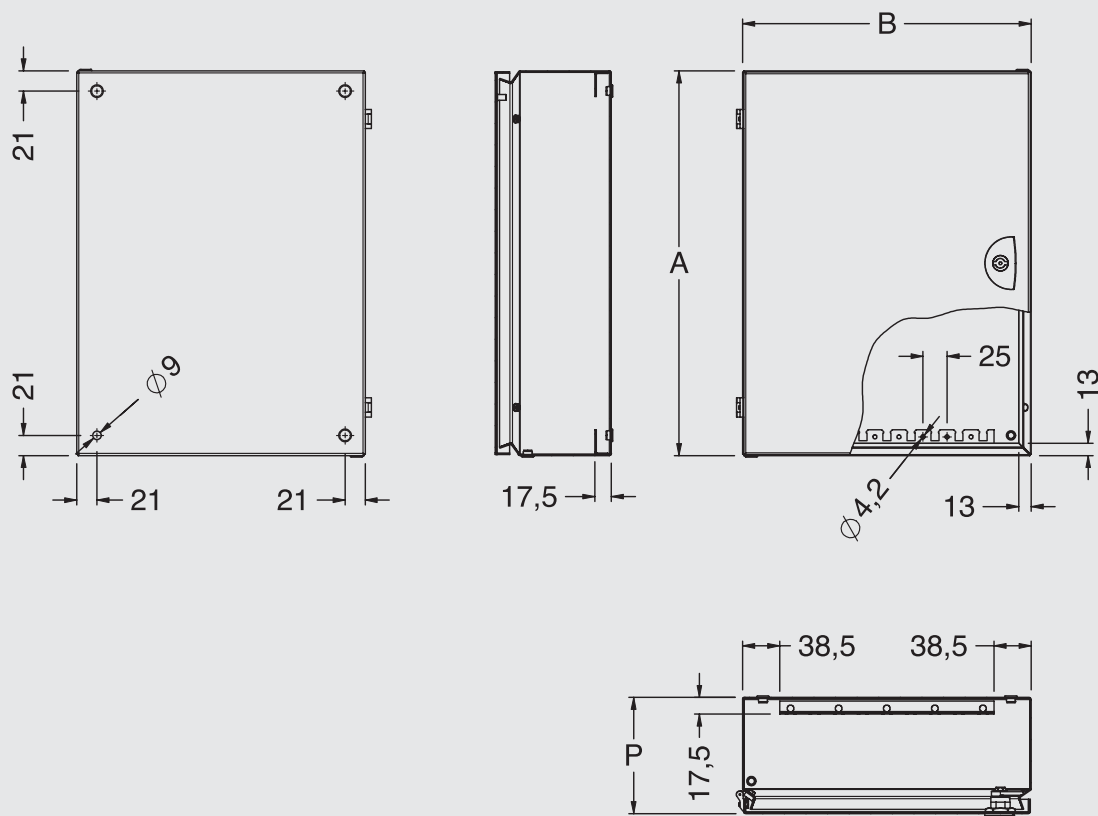
- IP 55.

## TERMINAL BOXES WITH DOOR

SDP CODE	B	DIMENSIONS		WEIGHT KG.
		A	P	
SDP2208	200	200	80	1.8
SDP2308	200	300	80	2.4
SDP2408	200	400	80	3
SDP2212	200	200	120	2.5
SDP2312	200	300	120	2.8
SDP2412	200	400	120	3.5
SDP2512	200	500	120	4.1
SDP3312	300	300	120	3.8
SDP3412	300	400	120	4.5

To be ordered separately:

- mounting plate and/or DIN rails.

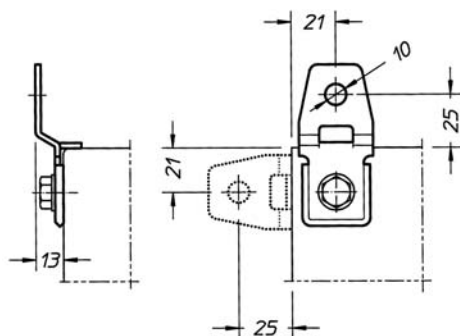




# SD TERMINAL BOXES COMPLEMENTARY ACCESSORIES

## WALL MOUNTING BRACKETS SDWC-010

Manufactured from 25/10 zincpassivated sheet steel.  
Supply includes: nr. 4 pieces.



## MOUNTING PLATE SDPA

Manufactured from 20/10 sendzimir sheet steel.  
Supply includes nr. 1 piece.

MOUNTING PLATE SDPA					
SDPA CODE	BOX DIMENSIONS		B	A	WEIGHT KG.
	WIDTH	HEIGHT			
SDPA-11	150	150	140	140	0.45
SDPA-22	200	200	176	170	0.59
SDPA-31	300	150	276	140	0.87
SDPA-32	300	200	276	170	0.92
SDPA-33	300	300	276	270	1.46
SDPA-42	400	200	376	170	1.26
SDPA-43	400	300	376	270	1.99
SDPA-44	400	400	376	370	2.73
SDPA-52	500	200	476	170	1.59
SDPA-53	500	300	476	270	2.53
SDPA-62	600	200	576	170	1.92
SDPA-63	600	300	576	270	3.06
SDPA-64	600	400	576	370	4.19
SDPA-82	800	200	776	170	2.59
SDPA-84	800	400	776	370	5.64



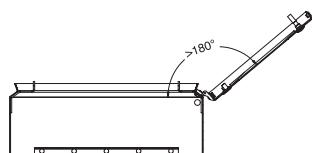
## HINGES SDWA-005

### CHARACTERISTICS

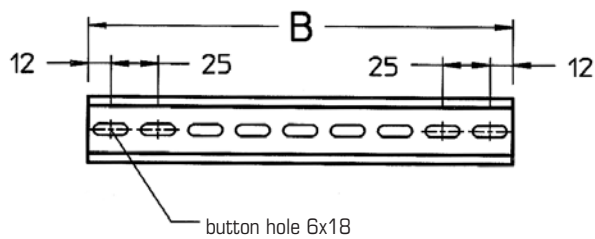
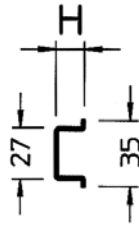
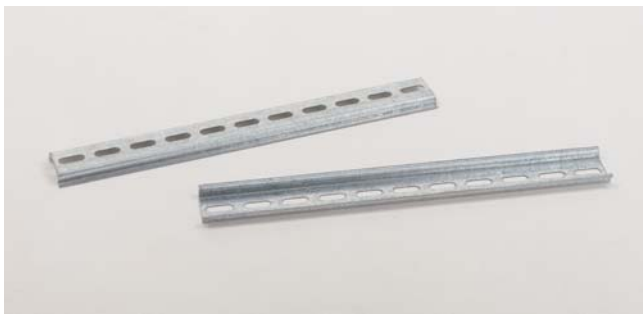
Manufactured from white zincpassivated alloy.

### DELIVERY

Supply includes nr. 6 hinges with mounting accessories.







## INNER RAILS SDWA

### CHARACTERISTICS

Manufactured from sendzimir sheet steel bars.

### DELIVERY

Supply includes nr. 10 pieces.

INNER RAILS			
SDWA CODE	BOX WIDTH	B	H
SDWA-013	150	125	7.5
SDWA-015	200	175	7.5
SDWA-020	300	275	7.5
SDWA-025	400	375	7.5
SDWA-030	500	475	7.5
SDWA-035	600	575	15
SDWA-040	800	775	15



# CR RACK BOXES

NEW  
DESIGN

The boxes cover a range from 3 to 21 U and are available in 2 depths with a larger cable entry. The locking system operating from the front of the box guarantees the sealing of the enclosure. The excellent appearance is achieved by external silk-screen printed plexiglas.

## CHARACTERISTICS

Three sections box manufactured from 15/10 press bent sheet steel. Door manufactured from 20/10 sheet steel with 4mm external silk-screen printed plexiglas complete with closing system Ø 3mm double bar key.

Supply includes mounting plate manufactured from 25/10 sendzimir sheet steel.

## PAINT FINISH

ETA standard epoxy polyester powder coating.

Colour: RAL 7035 textured finish.

Profiles for the fixing of the transparent panel: colour RAL 7025 textured finish.

## PROTECTION RATINGS

- IP 55.



## RACK BOXES

CR CODE	B	DIMENSIONS			MOUNTING PLATE		HE
		A	P	P1	L	H	
CR0345	600	226	450	230	492	150	3
CR0355	600	226	550	330	492	150	3
CR0645	600	359	450	230	492	283	6
CR0655	600	359	550	330	492	283	6
CR0945	600	492	450	230	492	416	9
CR0955	600	492	550	330	492	416	9
CR1245	600	626	450	230	492	550	12
CR1255	600	626	550	330	492	550	12
CR1545	600	759	450	230	492	683	15
CR1555	600	759	550	330	492	683	15
CR1845	600	892	450	230	492	816	18
CR1855	600	892	550	330	492	816	18
CR2145	600	1026	450	230	492	950	21
CR2155	600	1026	550	330	492	950	21



